

32mm 38mm & 45mm Chain System ROLLER BLINDS



FITTING GUIDE

Tools Required



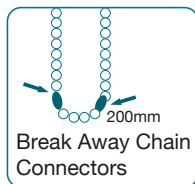
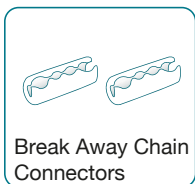
Child Safety

Young children can be strangled by loops in pull cords, chains, tapes and inner cords that operate the product. To avoid strangulation and entanglement, keep cords out of the reach of young children. Cords may become wrapped around a child's neck. Move beds, cots and furniture away from window covering cords. Do not tie cords together. Make sure cords do not twist and create a loop.

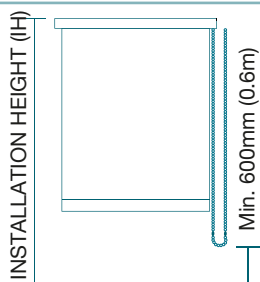
Safety Device

This product has been supplied with a chain system with two breakaway connectors that have been positioned 200mm apart making this blind safe in line with the new child safety regulations outlined in BS EN13120.

The chain break connector allows the chain to break apart if any reasonable force is placed in the loop. The connector only works when in the vertical position, for this reason, the two breakaway connectors have been fitted.



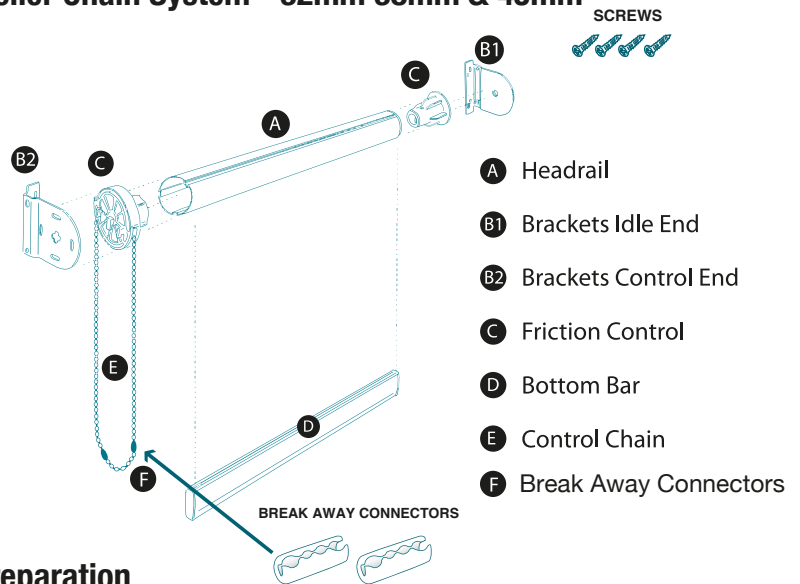
In order to comply with BS EN13120 the chain on this blind with two breakaway connectors must be fitted a minimum of 600mm (0.6m) from the floor.



WARNING

Children can strangle if this safety device is not installed. Always use this device to keep cords or chains out of reach of children.

Roller Chain System - 32mm 38mm & 45mm



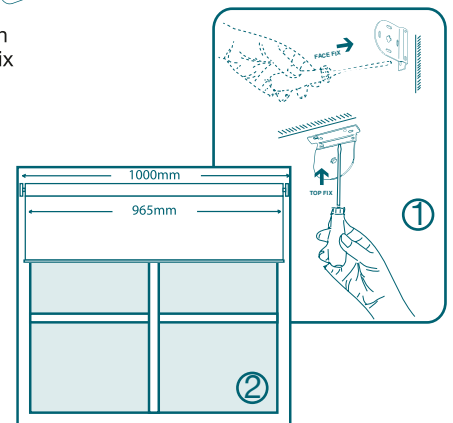
Preparation

1. Confirm the location of the brackets on the window, options are: Top fix or face fix as shown in Fig.1.

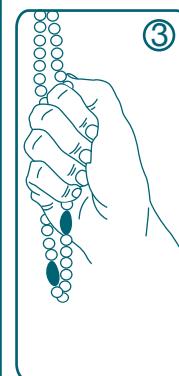
2. Identify the side of the blind that contains the control chain, this is known as the "control end" and should be fixed to the bracket that has a "+" sign located in the middle (B2). The opposite end with a single pin in the middle is known as the "Idle End" and is fixed to the bracket with the small hole in the middle (B1).

3. The brackets supplied with this blind are standard and therefore if you have any handles obstructing the free flow of the fabric please order the blind as a "Reverse Roll" which means having the roller tube between the fabric and the brackets or request extension brackets.

4. To calculate the spacing between the brackets, add 35mm to the tube length. Fix the brackets ensuring the outside of the brackets are tube +35mm apart. For example if the tube is 965mm the outside of the brackets



Operating Your Blind



1. To allow your blind to raise or fall, pull the chain and adjust blind to desired level. See Fig 3 Please ensure you do not continue pulling the chain once the blind is fully retracted as this will damage the rail and will not allow the blind to operate correctly.

Fitting The Blind

1. Hold the blind up to the brackets with the fabric hanging to the back of the roller tube for a standard blind. Please note if the blind has been ordered as a reverse roll, the fabric should hang to the front of the roller tube.

2. Fit the idle end of the roller blind into the bracket with a small circular hole (B1) and push it gently into the bracket, you will notice that a spring tension on the idle end will press inwards.

3. Fit the control end into the opposite bracket (B2) by placing the locating hook into the vertical part of the "+" sign and allow the hook to drop downwards, securing the blind. The spring tension in the idle end will ensure

To Remove The Blind For Cleaning

If you need to remove the blind from the brackets, hold the control end and lift of the bracket whilst pushing the idle end spring inwards. This will release the blind.